

Make Smarter IT Decisions From Edge To Cloud

HPE CloudPhysics

Get instant, data-driven insights to enhance application workload placement, procure right-sized infrastructure, lower costs, and transform the IT purchasing experience

Elevate Your Hybrid Cloud To Power Innovation

Every organisation undergoing digital transformation needs to optimise IT from edge to cloud to accelerate innovation and agility. But typical purchasing decisions are fraught with risk because without a comprehensive view of your current IT environment, you're simply unaware.

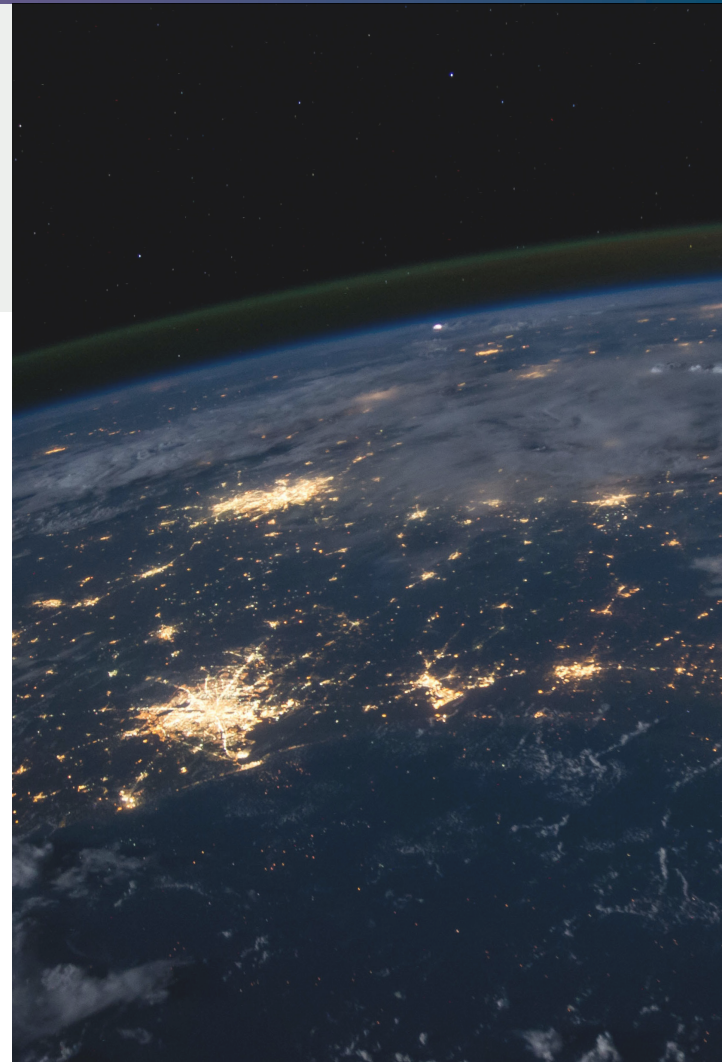
And though there are more IT options than ever before, you're still forced to rely on an ad hoc mix of spreadsheets, heuristics, and human intelligence to try to understand the myriad dependencies of your workloads on your underlying infrastructure. Managing hybrid cloud has become far too complex for humans to solve alone, and it has created an IT infrastructure planning and buying process that is inaccurate, time-consuming, and wasteful—and ultimately elevates risk in meeting your service-level agreements (SLAs).

Now is the time to leverage fast, informed decisions to help drive your digital transformation across clouds.

Move From Guesswork To Smarter IT Decisions

HPE CloudPhysics provides data-driven insights for smarter IT, giving you more power than ever before to understand and improve your IT infrastructure from edge to cloud.

The solution can be deployed in minutes, can generate insights in as little as 15 minutes, and has been proven to significantly increase the ROI on infrastructure investments.



The data capture of HPE CloudPhysics is one of the most granular in the industry and includes over 200 metrics for virtual machines (VMs), hosts, datastores, and networks. To date, HPE CloudPhysics has collected more than 200 trillion data samples along with data from 1 million VM instances worldwide.

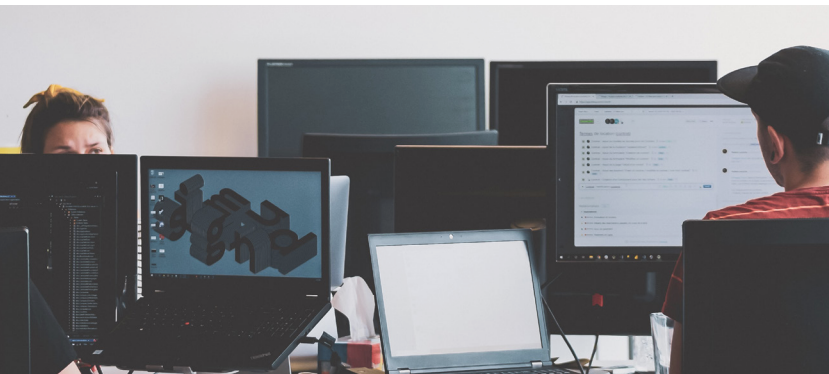
With deep insights that are vendor agnostic, you can instantly identify optimisation opportunities and simulate right-sized migrations for any set of workloads to a new infrastructure.

Optimise Your Workloads Across Clouds

With HPE CloudPhysics, you can easily collaborate with your solution provider to get the data you need to optimise your workloads across clouds. It's now simple to identify the ideal configuration for compute, memory, storage, and network when moving to the cloud.

Within minutes of activation, HPE CloudPhysics maps your entire VMware® infrastructure against current pricing and configuration options from the leading cloud providers, including Amazon AWS and Microsoft Azure. You can quickly and easily make data-supported decisions about the costs of running applications in the cloud based on the actual resource needs of your VMs.

With customised analytics and cost calculators, HPE CloudPhysics delivers the advanced tools you need to plan and design your hybrid cloud architecture and migration strategy.



Rightsize Your Infrastructure To Lower Costs

Before investing in new hardware and resources for your next IT budget cycle, know what you have and what you need.

Overprovisioned resources create hotspots and performance issues, but even idle workloads still consume resources, causing additional contention issues negatively impacting your capacity. With HPE CloudPhysics, you can rightsize your existing environment, helping ensure workloads live on one of the most cost-effective infrastructures possible.

HPE CloudPhysics collects and analyses fine-grained resource utilisation data from each one of your VMs, enabling you to accurately see the resources that each VM needs to perform its job.

For example, if a VM has been configured with eight vCPUs, but HPE CloudPhysics reports that it never uses more than two vCPUs to run its applications, then you have discovered an opportunity to rightsize that VM to a smaller instance.

If you are evaluating a move to the cloud, rightsizing your infrastructure is critical to help ensure you don't migrate idle resources and pay for what you don't need.

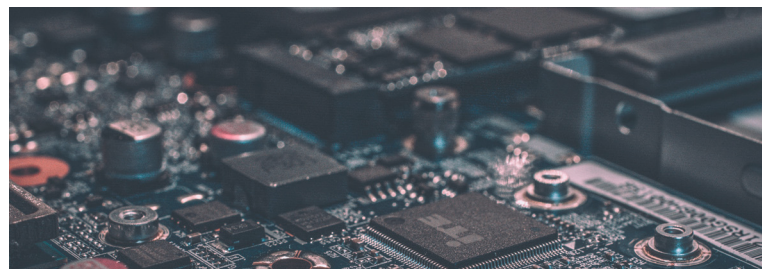
Transform The It Purchasing Experience

Through increased visibility and understanding, HPE CloudPhysics transforms the procurement process, so you can increase your time to value and ROI in infrastructure planning.

HPE CloudPhysics makes sharing insights among approved persons inside or outside your organisation fast and simple. As a result, you can engage and collaborate with your preferred solution providers to form more productive partnerships. Whether the partnership is trying to improve a virtual data center, transform a private cloud, or look to transition some

workloads to public clouds, HPE CloudPhysics can help you optimise your workloads and IT spend across your edge-to-cloud environment.

Accomplish your IT goals with more efficient IT infrastructure planning and procurement.



To learn more about HPE CloudPhysics and how you can make smarter IT decisions, speak to one of our CCS Media Datacentre & Networking Specialists.

call: **01246 200 200** | email: **letstalk@ccsmedia.com** | visit our website at **ccsmedia.com**