

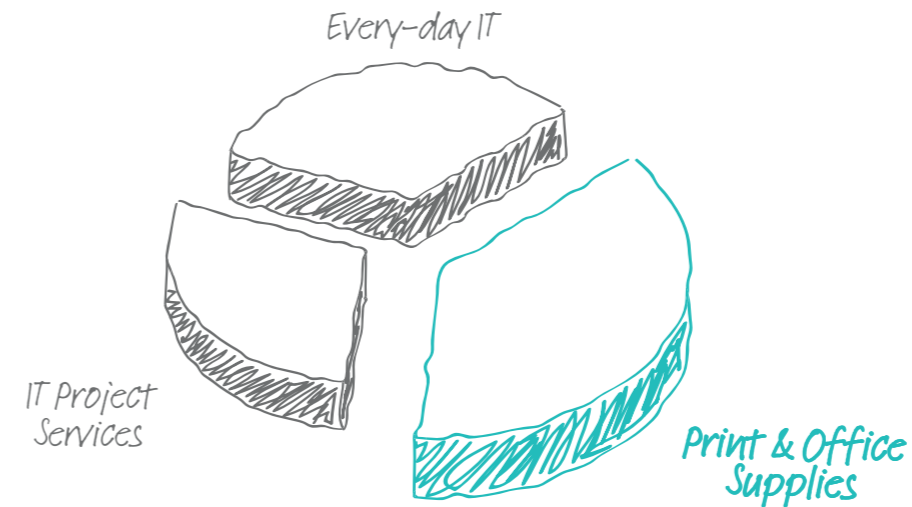


# Print & Office Supplies



**“THE FOOTPRINT ENGINEER  
INSTALLED OUR TRIAL CARTRIDGE  
AND WE RAN A TEST FOR THE  
DURATION OF THE TONER’S  
LIFE. THE RESULTS WERE VERY  
IMPRESSIVE AS WAS OUR USER  
FEEDBACK.”**

*The Hospital Group*



## WHAT WE DO ENHANCES YOUR BUSINESS

We work with the world's leading brands to provide Everyday IT, Print and Office Supplies and deliver IT Projects to over 4000 customers.

These customers range from private to public sector SME and enterprise organisations and no two of them are the same.

That's why they all receive a different kind of service but one that's exactly the same: knowledgeable, friendly and collaborative.

By taking the time to get to know our client's individual needs, we build relationships that last and partnerships that grow.

## WHAT THEY SAY...

We centralise our buying through the head office in Birmingham and like any company we are always looking for better solutions that can improve our performance.

Print consumables were one of the key areas they identified. At first I was dubious but CCS Media arranged an engineer led trial of their Footprint brand.

The Footprint engineer installed our trial cartridge and we ran a test for the duration of the toner's life. The results were very impressive as was our user feedback.

I was pleasantly surprised and decided to extend the trial across several machines. I wanted to make sure we'd get the same results across a number of makes and models.

After this trial I saw no loss in performance over the range and our users were very happy so we decided to create a staged roll out of Footprint throughout the business.

We now use Footprint as our preferred brand of printer supplies. Given the proven performance, significant cost savings and excellent engineer support, Footprint is our natural choice for print.

*The Hospital Group*



## WHO WE ARE WHY CCS MEDIA?

For over 30 years CCS Media have been helping organisations across the UK maximise their full potential by supplying them Everyday IT, Print and Office supplies and delivering large-scale IT projects.

Located throughout the UK with 16 sites employing over 250 people. We're privately owned with a turnover of £80 Million. This gives us the scale to be competitive and the skills to be true experts in our field.

We deliver a full business service that has evolved over the years into something that we all take pride in.

A very unique business focused on our clients business.

### OUR PHILOSOPHY

Whatever it takes – This philosophy runs through every single thing we do. We live it.

### OUR CULTURE

We're a family orientated, people business.

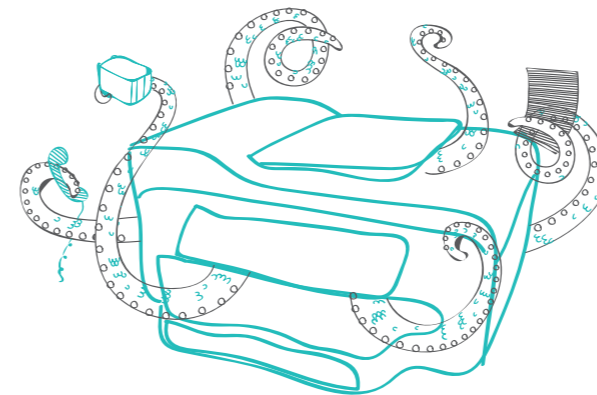
Although we're extremely serious about our business, it doesn't stop us taking time to enjoy everything CCS Media.

Determined, hardworking, fun would sum it up very simply.

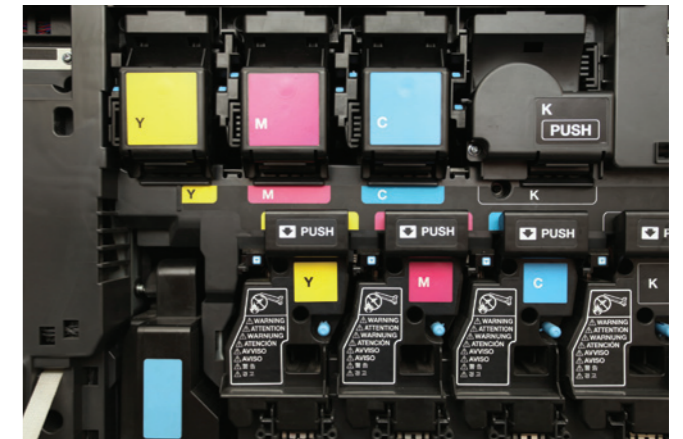


**"WE HAVE NOW BEEN USING FOOTPRINT FOR OVER 12 MONTHS. OUR SUPPLIES' SPEND HAS ACTUALLY REDUCED BY OVER 20% WITHOUT ANY COMPROMISE ON QUALITY."**

*Innovia Films*



## PRINT & OFFICE SUPPLIES 30 YEARS OF GETTING IT RIGHT



CCS Media have been supplying print and office supplies to the public and private sectors, SMB and Enterprise organisations for nearly 30 years, we're experts at it.

Using the huge bank of industry knowledge we've amassed, our Print and Office Supplies team specialise in developing tailored solutions that are specific to your individual business needs.

From print and print consumables, offices supplies, furniture and facilities management, we always get to the heart of your business to deliver exceptional results.

## OFFICE FURNITURE SIMPLE FURNITURE SOLUTIONS

Our office furniture solutions are modern and easy to purchase. We provide a complete end-to-end service from planning, delivery and build.

We can offer practical solutions for any space, from a huge commercial operation through to a small or home office, giving you the opportunity to create the perfect working environment.

Unlike traditional furniture suppliers, we deliver right to your door with assembly options.

## OFFICE PRODUCTS 7,500 PRODUCTS, 1 OUTSTANDING ACCOUNT MANAGER

We supply over 7,500 office products so we are confident that we can provide everything your business needs.

However, the clever bit is reducing this number down to the essential items your business needs. This is achieved by our hard working account managers who take the time to get to know your business and how it operates. Once they know this they can ensure you're always fully stocked with the products you need.



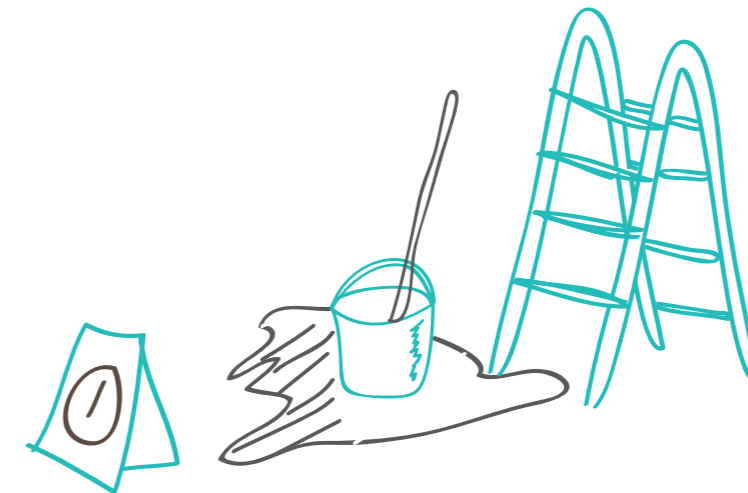
## FACILITIES MANAGEMENT OFFERING EXPERIENCE AND EXPERTISE

Our facilities management customers are both large and small, public and private sector. This gives us the experience and expertise to deliver a bespoke solution that provides our clients with exactly the right thing for their business.

We can also offer alternative solutions and recommend different products, and due to our buying power our prices are always competitive.

CCS Media also understand the importance of keeping ordering and delivering simple. It's your dedicated account manager's job to make sure things are there when you need them.

This combination of scale, speed, reliability and customer service shows that we never take the things you need for granted.



## WHAT THEY SAY...

Our printer estate is over 200 strong so our printer supplies usage is high. As part of an on going service review CCS Media identified a substantial cost saving on supplies spend, potentially saving us around 20% annually.

At Innovia Films we are always evaluating cost and efficiency so this was something we liked the sound of.

However, this was tempered a little when CCS Media started to talk about alternative brand cartridges.

With over 30 years' experience, CCS Media are experts at working with print and print supplies and that's why they only endorse Footprint as an alternative cartridge. They reassured me that Footprint would perform as well as any brand of cartridge and they would guarantee no loss of print yield or quality.

Initially we set up a trial, an engineer visited the site and cleaned the test printer. We were then ready to start.

After the trial we received a performance report but we already knew that everything was fine.

*Innovia Films*

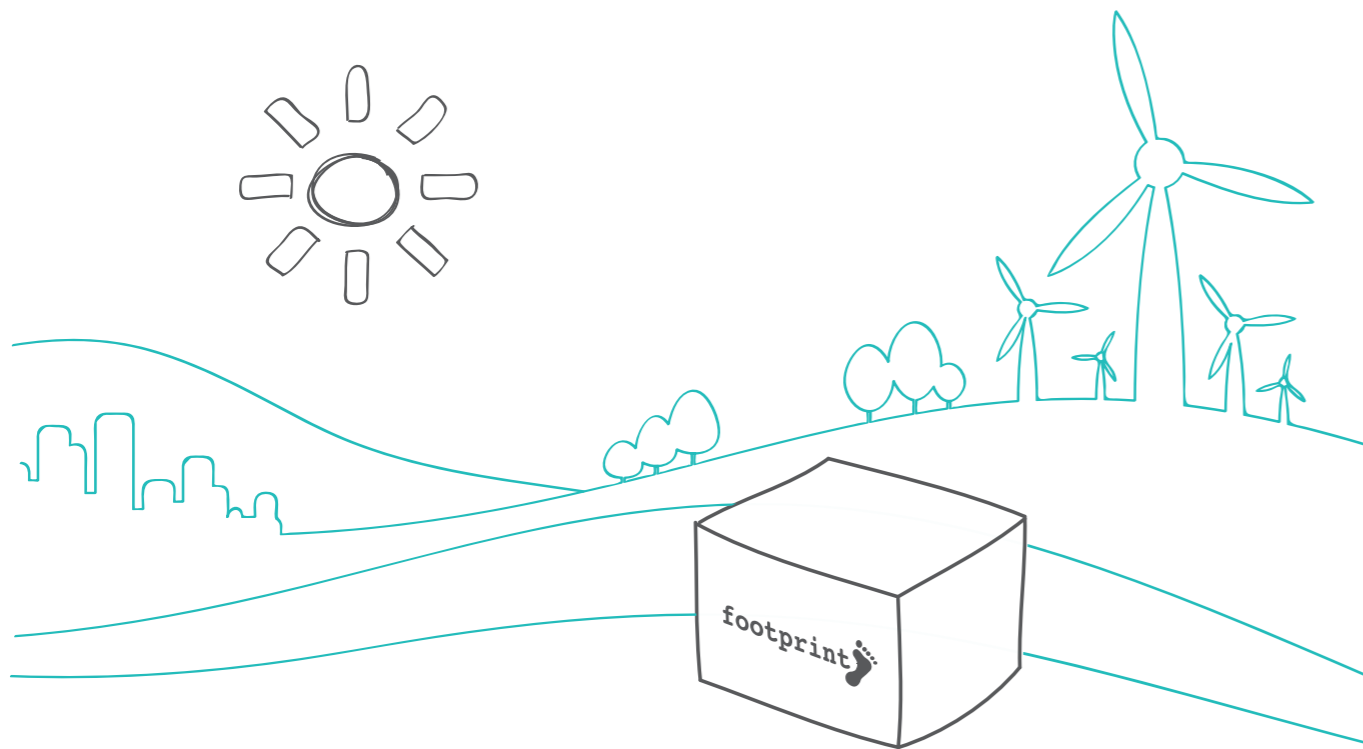
## FOOTPRINT REDUCE COST NOT QUALITY

Footprint is our own brand of premium toner cartridges. Footprint delivers high performance printing both in terms of print quality and page yield while offering great value and reliability.

Typically Footprint saves companies around 20% on their toner costs and it also helps to reduce their carbon footprint too.

We also ship all cartridges with a no quibble money back guarantee. If that's not enough, talk to us about our proof of concept service.

We're very confident that when you try Footprint for yourself it will make a lasting impression.



## PRINT & PRINT MANAGEMENT TAKING THE PAIN OUT OF PRINT

We demystify the whole process of print and print management. Our range of solutions gives you freedom and flexibility. You can mix and match to suit your business.

Simply Print — Sometimes all you need is a printer!

Enhanced Print — Printing with maintenance and support with supplies management.

Managed Print — Full managed print service.

We work with all the leading print manufacturers so we are certain we can provide a solution that is unique to your needs and fits your business perfectly.

Using our services should also help your environmental and performance targets, as we have been proven to improve efficiency.

If you're interested, just ask your account manager and they'll be happy to go through everything with you.



## PRINT CONSUMABLES SIMPLIFYING SUPPLIES SOLUTIONS

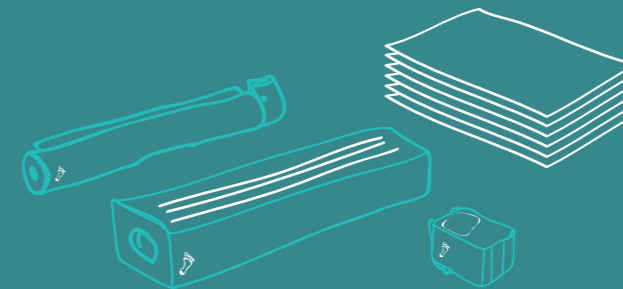
CCS Media work with key brands like HP, Brother and Lexmark to deliver complete print and supplies solutions.

Being a specialist partner we work with every single customer individually so we can provide the best support for your print supplies management.

This tailored approach offers great value and service while making life easier when purchasing. It also gives more freedom and flexibility.

And because we are always looking for ways to help our customers we've introduced our own Footprint range.

It delivers the quality you need whilst reducing costs. Speak to your account manager to learn more.



# WE WORK WITH THE WORLD'S LEADING BRANDS TO PROVIDE EVERYDAY IT, PRINT/OFFICE SUPPLIES AND DELIVER IT PROJECTS TO OVER 4000 COMPANIES.

## LOCATIONS HOW TO CONTACT US

Find us on:   

### HEAD OFFICE

Old Birdholme House  
Derby Road  
Chesterfield  
Derbyshire  
S40 2EX

T: 01246 200 200  
F: 01246 207 048

### BIRMINGHAM

MSO  
Cranmore Place  
Cranmore Park  
Solihull  
West Midlands  
B90 4RZ

T: 0121 7127 490  
F: 0121 7127 491

### BOLTON

6th Floor  
120 Bark Street  
Bolton  
Lancashire  
BL1 2AZ

T: 01204 540 800  
F: 01204 540 801

### BOREHAMWOOD

4 Imperial Place  
Maxwell Road  
Borehamwood  
Hertfordshire  
WD6 1JN

T: 0208 2367 100  
F: 0208 2367 119

### BRADFORD

6, Fieldhead Road  
Fieldhead Business  
Centre  
Bradford  
West Yorkshire  
BD7 1LW

T: 01274 379 880  
F: 01246 246 000

### CENTRAL LONDON

Unit 6, Vision Industrial Park  
Kendal Avenue  
Park Royal  
Acton  
London  
W3 0AF

T: 0208 752 8410  
F: 0208 752 8411

### LEATHERHEAD

Dorset House  
Regent Park  
297 Kingston Road  
Leatherhead  
Surrey  
KT22 7PL

T: 01372 226 158  
F: 01372 226 151

### LEEDS

Ground F1, Building 3  
City West Business Park  
Geldard Road  
Leeds  
West Yorkshire  
LS12 6LN

T: 0113 2244 060  
F: 0113 2244 061

### MANCHESTER

2a 2nd Floor Duckworth House  
Lancastrian Office Centre  
Talbot Road  
Old Trafford  
Manchester  
M32 0FP

T: 0161 7721 290  
F: 0161 7721 291

### ROMFORD

2nd Floor  
St Georges House  
2-4 Eastern Road  
Romford  
Essex  
RM1 3PJ

T: 01708 385 390  
F: 01708 768 998

### SCOTLAND

Maxim 1-1st Floor  
2 Parklands Way  
Maxim Business Park  
Eurocentral  
Motherwell  
ML1 4WR

T: 01698 838 830  
F: 01698 838 831

### SHEFFIELD

CCS Media Ltd  
Building A07  
Magna 34 Business Park  
Temple Road  
Rotherham  
S60 1FG

T: 01709 787 550  
F: 01709 375 720

### WALES

Princess House  
Princess Way  
Swansea  
SA1 3LW

T: 01792 482 790  
F: 01792 482 791

### WARRINGTON

Cinnamon House  
Cinnamon Park  
Crab Lane  
Fearhead  
Warrington  
WA2 0XP

T: 01925 846 090  
F: 01925 846 091

### WINDSOR

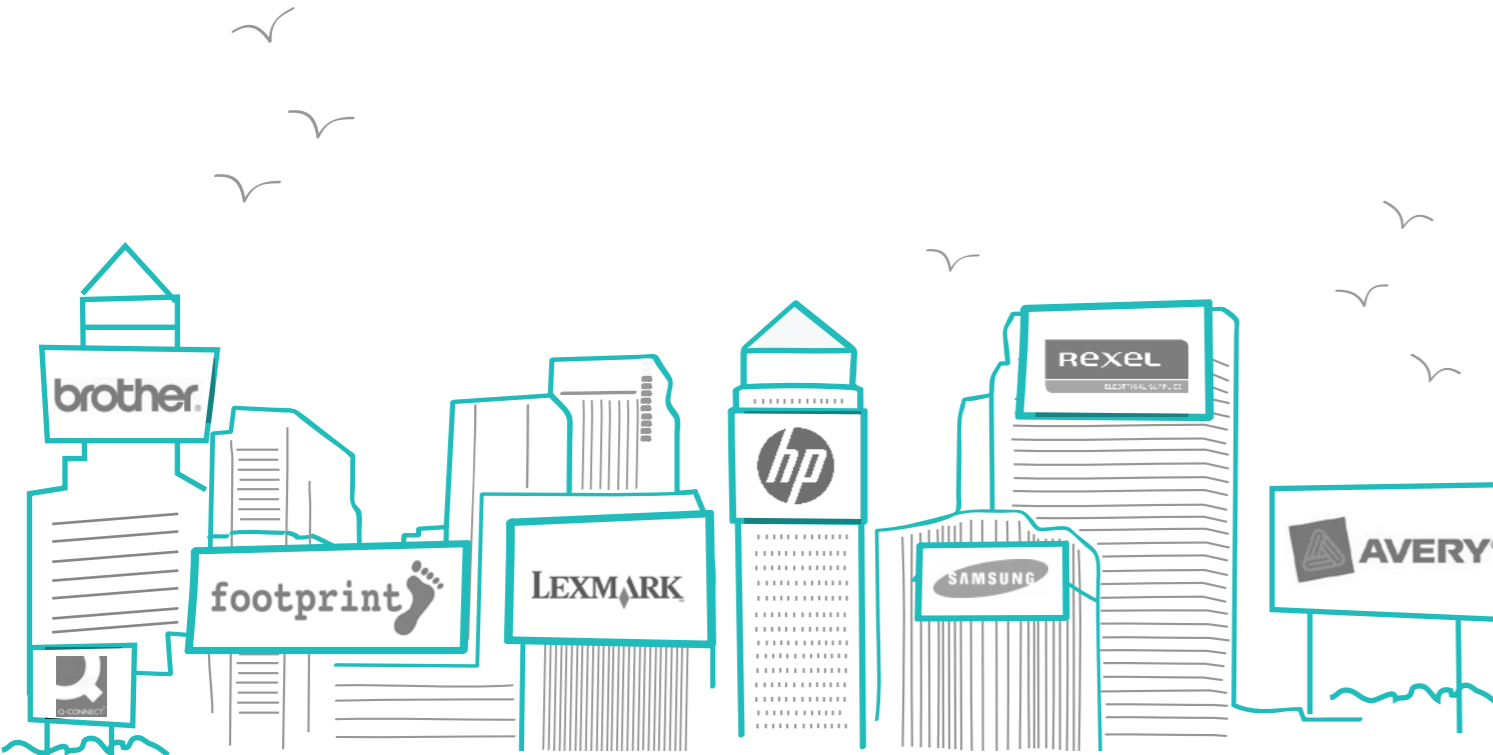
Thames Court  
1 Victoria Street  
Windsor  
Berkshire  
SL4 1YB

T: 01753 483 400  
F: 01753 483 401

### UXBRIDGE

Highbridge  
Oxford Road  
UB8 1HR

T: 01895 454 650  
F: 01895 454 651





**CCS MEDIA**  
**HEAD OFFICE**

Old Birdholme House  
Derby Road  
Chesterfield  
Derbyshire  
S40 2EX

**T: 01246 200 200**

**F: 01246 207 048**

**letstalk@ccsmedia.com**

**www.ccsmedia.com**

Scan to visit  
[ccsmedia.com](http://ccsmedia.com)

